



ARTIST RESIDENCY

BERGAMO | ITALY

© BTSP & CRIS INTERNATIONAL

ARTIST RESIDENCY

BERGAMO | ITALY

BTSP & CRIS INTERNATIONAL

CONCEPTUAL MEMORANDUM OF THE ARTISTIC RESIDENCY

BTSP & CRIS International

Located on the shores of serene Lake Endine, in the small and authentic village of Ranzanico, this Artist Residency offers an intimate and profound creative experience in dialogue with Italian nature. The lake, surrounded by mountains and forests, becomes a mirror and metaphor for the artistic process: surface and depth, reflection and transformation. In this environment of contemplation and silence, the artist is invited to slow down, observe, and reconnect with the essential gesture.

The residency is conceived as a journey:

From paper to canvas.

From drawing to painting.

From idea to material.

From individual practice to collective encounter.

The Lombard landscape functions not only as a backdrop but also as a sensory and emotional stimulus. The water, the changing light, the textures of the stone and vegetation nourish a painting practice that integrates perception, technique, and sensitivity.

This experience offers four days of immersion where art is experienced as a process, a community, and a celebration.



Big Turtle Atelier - Comune di Ranzanico, Bergamo

INVITATION TO THE ARTISTIC RESIDENCY IN ITALY

Bergamo

We invite you to a creative experience in the heart of Northern Italy.

For four days, you'll share a studio workspace, participate in life drawing sessions, develop your painting skills, and attend a ceramics workshop, combined with lakeside walks, culinary experiences, and artistic exchanges.

This residency is for visual artists, painters, illustrators, and creators who wish to deepen their practice in an inspiring natural setting.

It's not just about producing artwork, but about experiencing the creative process together.

MODALITY

Inmersive Artistic Residency (4 days)

Included Services:

- Transfer from Bergamo
- Studio workspace.
- Model for drawing session.
- Ceramics workshop with basic materials.
- Artistic and technical guidance.
- 3 breakfasts, 2 dinners, 1 lunch, and 2 snacks.
- Photographic documentation of the process and final artwork.

Optional extra services (not included/recommended):

- Visit to Bergamo (Città Alta) and Museums.
- Exhibition and Video Production Record Interview.

Important Notes:

- Extra services 1 and 2 do not include guides or on-site accompaniment. Assistance is offered for ticket purchases, transportation information, and answering questions. Residents will make their own visits, with support from the residence team.
- The Exhibition Only service includes: exhibition curation, setup and takedown, catering, graphic design, audiovisual recording, and promotion.

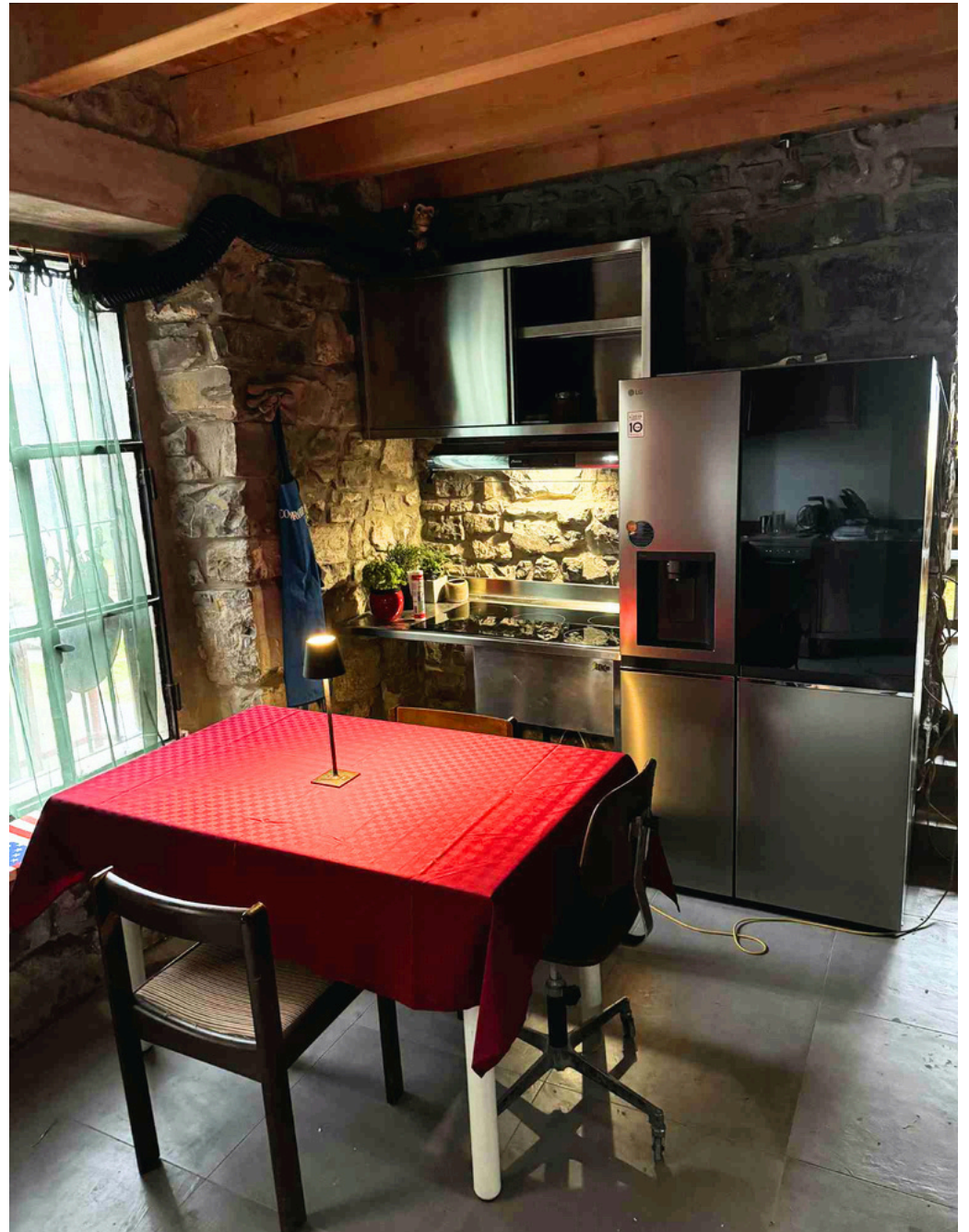
Reference price – Included services: € 875

Estimated management fees – Additional services:

- Between € 49 and € 149 (one day, includes transportation, and tickets).



Lago di Endine, Ranzanico - Bergamo



Residency Big Turtle Sculpture Park - Comune di Ranzanico, Bergamo

ARTISTIC JOURNEY PLAN

DAY 1 – WELCOME & MEETING

- Artists arrive at the studio.
- Presentation of the program and working methods.
- Conceptual introduction: landscape, body, and matter.
- Welcome dinner at the studio.
- Space for exchange and artistic dialogue.

DAY 2 – FROM DRAWING TO CANVAS

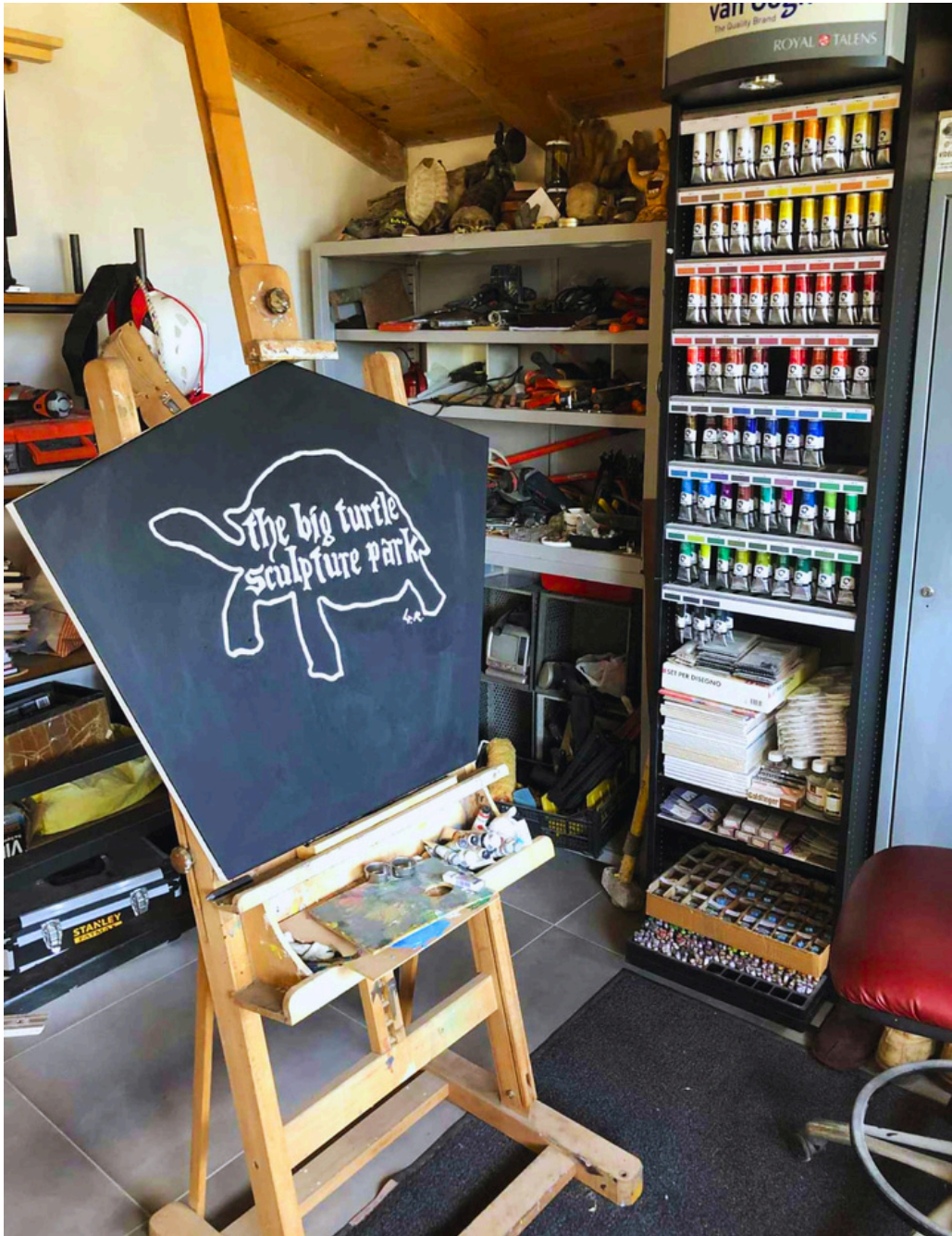
- Drawing session with a model.
- Exploration of line, gesture, and body structure.
- Technical work: Transition from paper to canvas.
- Composition and first layers of paint.
- Contemplative walk around Lake Endine.
- Landscape observation and visual recording.
- Aperitif by the lake.

DAY 3 – PAINTING & CERAMICS

- Formal introduction to painting.
- Chromatic development and atmosphere building.
- Ceramics workshop: Exploring materials, volume, and texture.
- Manual work as an extension of the painterly gesture.
- Continuation of painting in the studio.
- Group dinner in the studio.
- Reflection on processes and progress.

DAY 4 – FINISHING & CLOSING

- Last day of painting.
- Conclusions, final adjustments, and consolidation of the artwork.
- Lunch in the studio.
- Farewell with refreshments and group closing remarks.
- Final discussion and photographic documentation of the artwork.

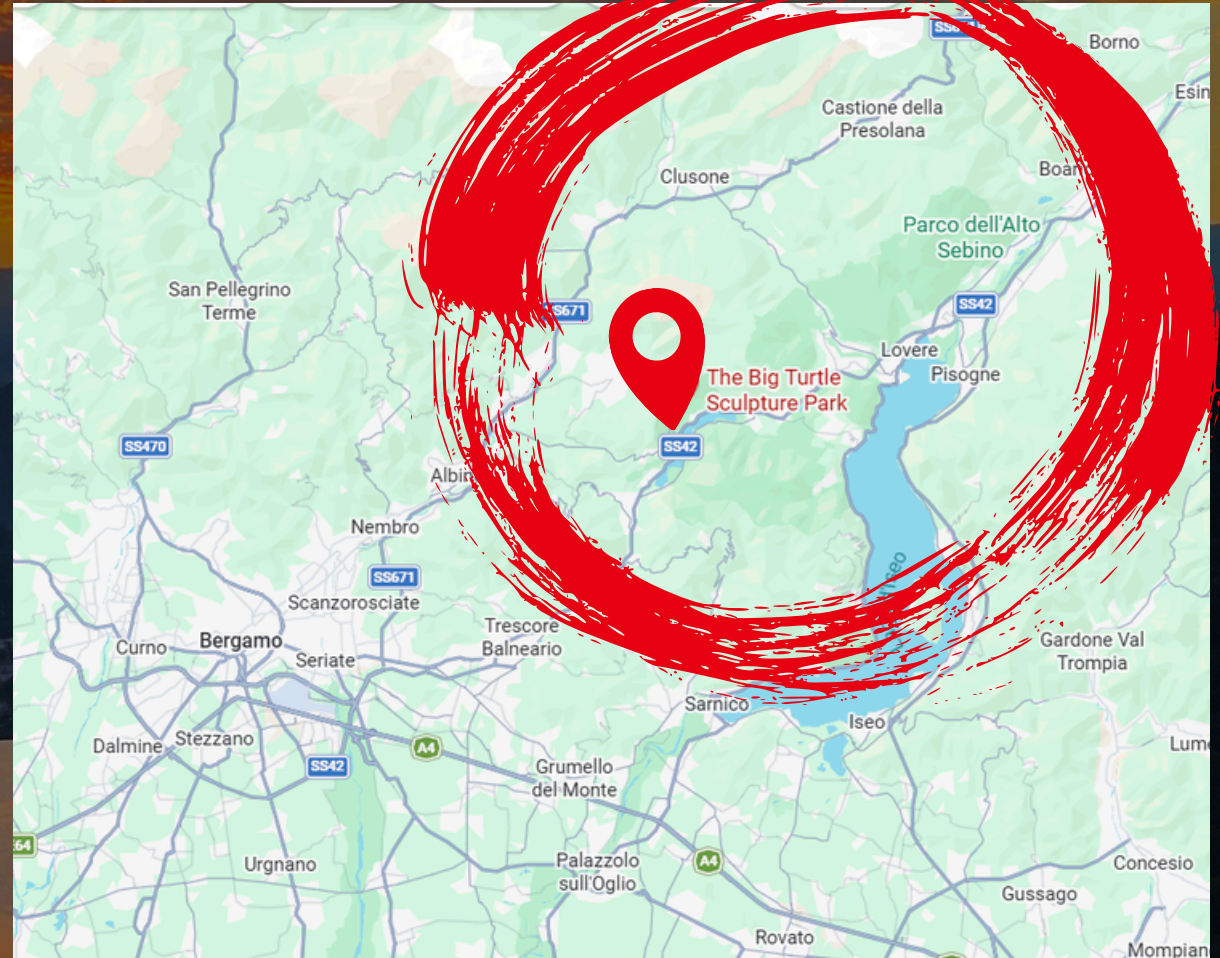
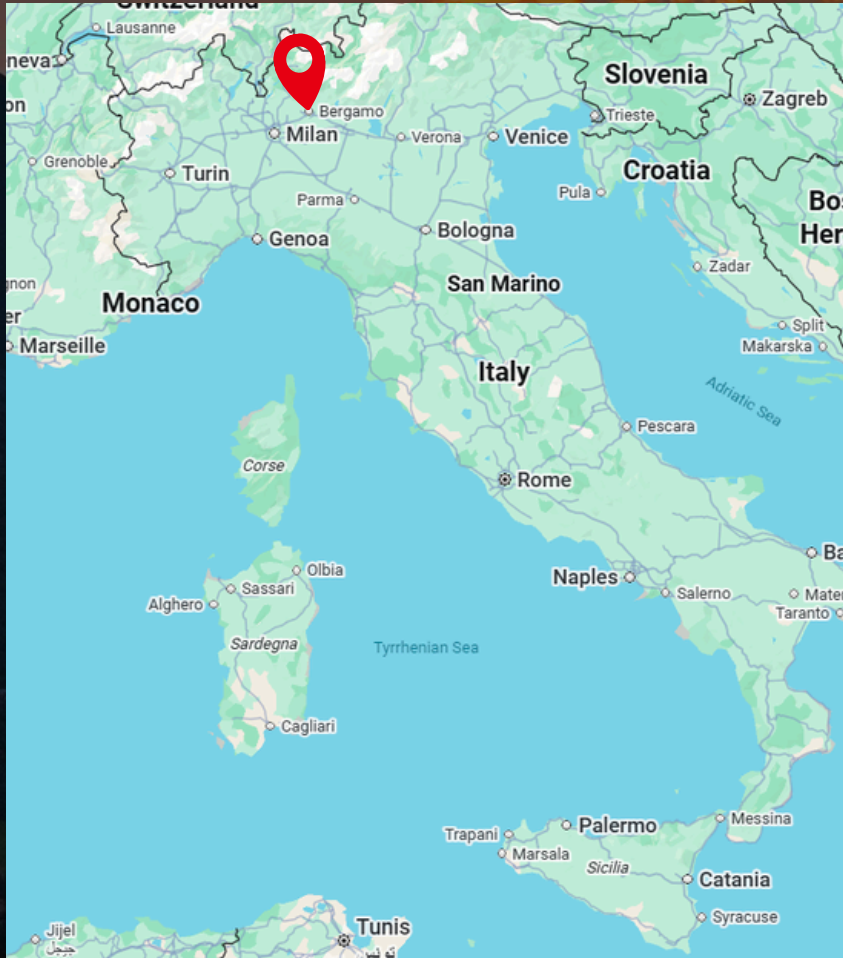


Big Turtle Atelier - Comune di Ranzanico, Bergamo

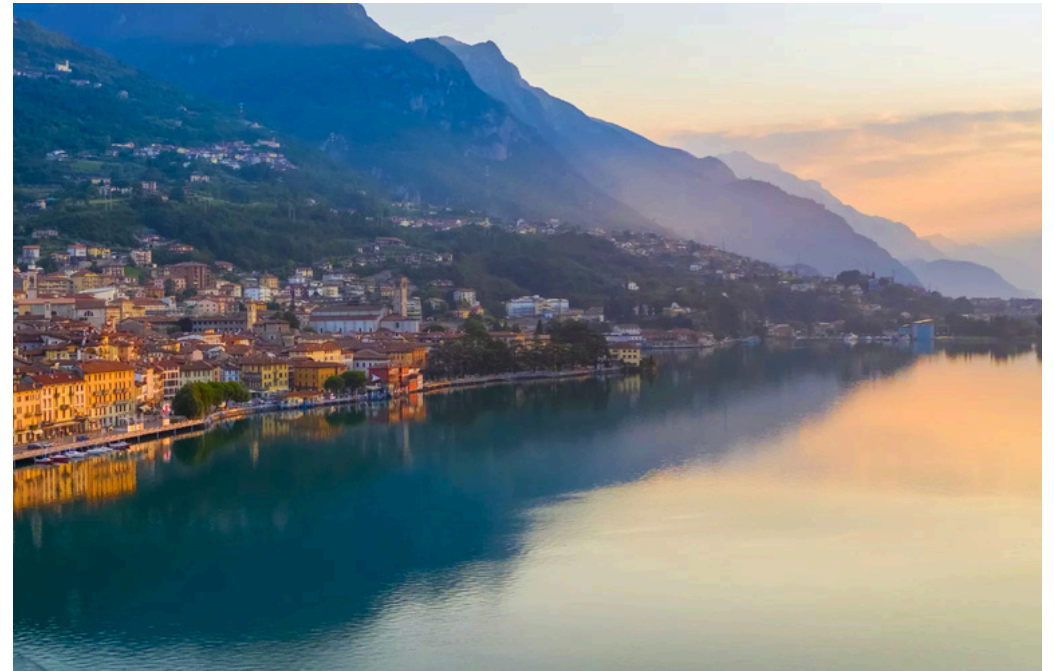


Museo Fal'Fil dal baco alla seta - Comune di Ranzanico, Bergamo

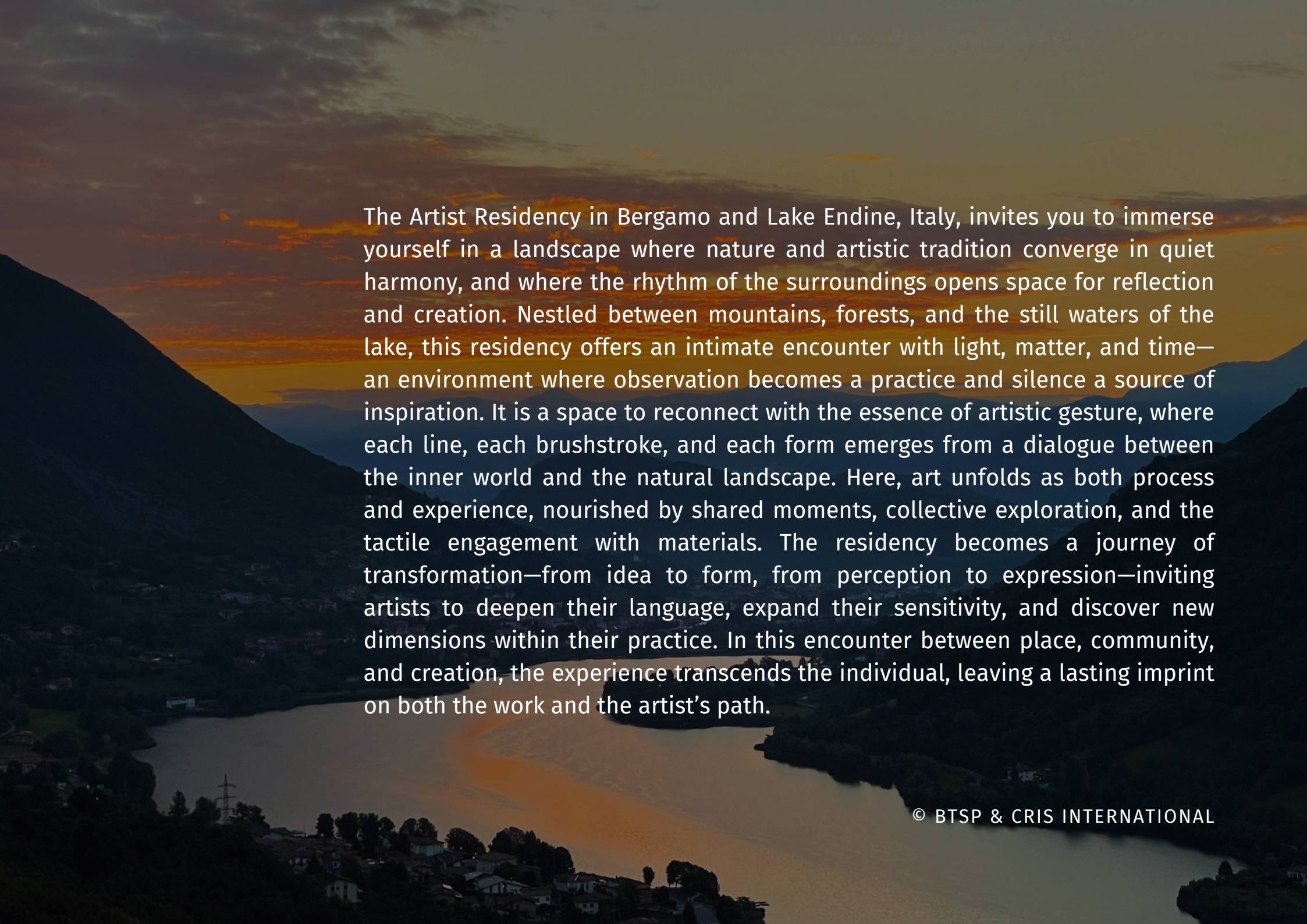
ART RESIDENCE LOCATION: RANZANICO, LAKE ENDINE, PROVINCE OF BERGAMO - LOMBARDY REGION, ITALY



Residency Big Turtle Sculpture Park - Comune di Ranzanico, Bergamo



Residency Big Turtle Sculpture Park - Comune di Ranzanico, Bergamo



The Artist Residency in Bergamo and Lake Endine, Italy, invites you to immerse yourself in a landscape where nature and artistic tradition converge in quiet harmony, and where the rhythm of the surroundings opens space for reflection and creation. Nestled between mountains, forests, and the still waters of the lake, this residency offers an intimate encounter with light, matter, and time—an environment where observation becomes a practice and silence a source of inspiration. It is a space to reconnect with the essence of artistic gesture, where each line, each brushstroke, and each form emerges from a dialogue between the inner world and the natural landscape. Here, art unfolds as both process and experience, nourished by shared moments, collective exploration, and the tactile engagement with materials. The residency becomes a journey of transformation—from idea to form, from perception to expression—inviting artists to deepen their language, expand their sensitivity, and discover new dimensions within their practice. In this encounter between place, community, and creation, the experience transcends the individual, leaving a lasting imprint on both the work and the artist's path.

BTSP & CRIS International

This Artist Residency proposal and all the materials it contains—writings, photographs, paintings, brochures, and graphics—were created and produced entirely in collaboration between CRIS International and BTSP, both companies assuming full responsibility for its content.

Reproduction, incorporation into a computer system, or transmission of this material, in whole or in part, in any form or by any means, whether electronic, mechanical, photocopying, recording, or otherwise, is prohibited without the prior written authorization of the author.

Infringement of the aforementioned rights may constitute an offense against intellectual property under the relevant article of the Penal Code, as well as the Terms and Conditions and articles of the Swiss Federal Copyright and General Rights Act—SR 231.1 Copyright Act (CopA) of October 9, 1992—including limitations of liability and waivers of legal action.

©CRIS INTERNATIONAL, 2026

First Edition: April 2026

Produced by CRIS International - Swiss Art Company & BTSP

<https://www.crisinternationalch.com/>





CRIS
INTERNATIONAL
Swiss Art Company



© BTSP & CRIS INTERNATIONAL